

# Arthritis BIKE CLASSIC

**PESCADERO**

*Ten things worse than biking in the rain (and ten ways to make it better)*

We have been checking the weather for Sunday. As of Wednesday, the forecast is for a 58% chance of rain around 2:00 p.m. on Sunday. Most folks will be done riding, though we do have SAG wagons if need be.



## Top 10 Things Worse Than Biking in the Rain!

- 1 Being on hold with customer service after your computer breaks
- 2 Waiting in line at the DMV
- 3 Sitting in gridlock traffic on a sunny day
- 4 Waiting for the bus in the rain
- 5 Going to the dentist
- 6 Taking a final exam
- 7 Biking in 105 degree heat
- 8 Talking about the Alaskan Way Viaduct
- 9 Sitting in front of a computer all day long
- 10 Singing karaoke/listening to partner sing karaoke



# WELCOME!

## To the 1<sup>st</sup> annual Arthritis Bike Classic - Pescadero

presented by  
**AMGEN**

We at the Arthritis Foundation are very excited to present the latest and final addition to the Arthritis Bike Classic Series.

Stay tuned for more information about events this fall to keep us in shape and fired up about the 2017 season.

### Sunday, October 2, 2016 Schedule

Registration	6:45 a.m. - 9:30 a.m.
Group Start for 62 milers	7:30 a.m.
Group Start for 47 milers	8:30 a.m.
Group Start for 17 milers	9:30 a.m.
Group Start for 27 milers	9:30 a.m.
<b>Lunch</b>	11:45 a.m. - 3:30 p.m.
EXPO Opens	10:00 a.m. - 3:00 p.m.
Presentations, Awards	1:00 p.m. - 1:45 p.m.
Route Sweeping	2:45 p.m.
Time for Team Tidy-Up	3:00 p.m.
Barn Door Closes	3:30 p.m.

## Top 10 Ways to Improve Biking in the Rain!

- 1 Long fingered gloves
- 2 Extra layers for riding and lunch
- 3 Rain jacket
- 4 Extra tube
- 5 Fenders
- 6 Booties
- 7 Lights
- 8 Cycling cap with visor
- 9 Something for cleaning glasses
- 10 Thoughts of delicious lunch waiting at "Finish Line" for you!



*Thank you for your support and becoming a part of the new community around this event.*

## DATES COMING SOON!

### 2017 Arthritis Bike Classic - Marin

- Launch Party
- Ride

### 2017 Arthritis Bike Classic - Pescadero

- Launch Party
- Ride

2017

# Thanks to our Sponsors

*"You are the Cartilage in our Meniscus"*

# AMGEN®

# abbvie®



*Give a Little*

WEBCORBUILDERS



PRIMAL



TRADER JOE'S





# Arthritis BIKE CLASSIC

**PESCADERO**

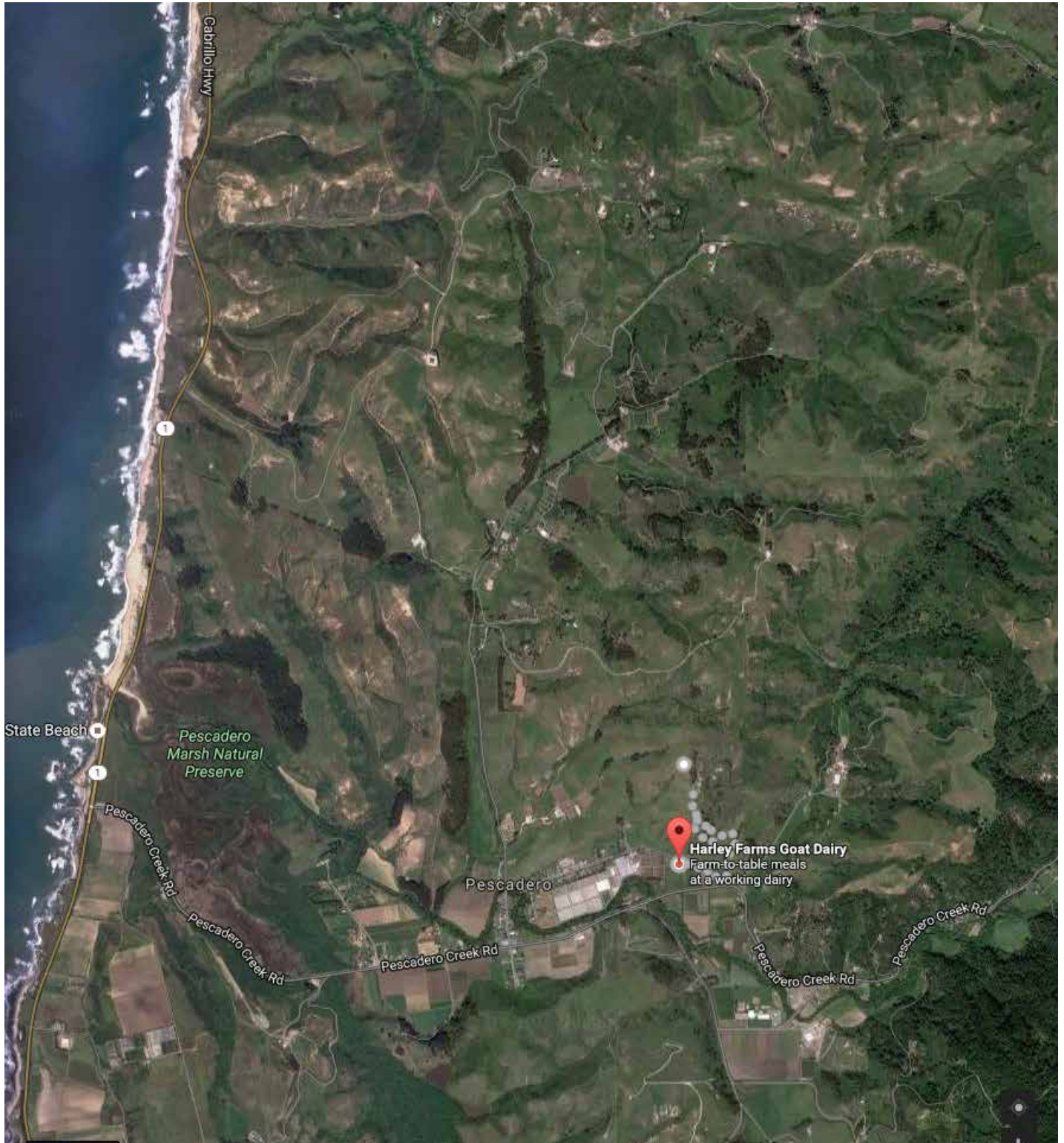
## Driving Directions.

From Interstate 280 > Hwy 84 > Left on Hwy 1 > Left at Pescadero Creek Road

From Interstate 280 > Hwy 92 > Left on Hwy 1 > Left at Pescadero Creek Road

From Santa Cruz area > North on Hwy 1 > Right at Pescadero Creek Road

Venue will be on the left. Parking will be on the right.





# Arthritis BIKE CLASSIC

**PESCADERO**

## PARKING Directions: Coming from HWY 1

- Participate Parking will be on the RIGHT
- VIP, EXPO, VENDOR, EMT, SAG, HAM will be on the LEFT, behind the barn.

