

Your Map to Great



Event Space at RRP!

14th Street Overlook

Double-header view
Exclusive area with elevated vantage point overlooking Lawn Terraces and Birmingham's new Regions Field. Perfect for small gatherings of VIPs or friends.

West Gate

A unique mix of green space and pavement to host your event. View of Lawn Terraces and The West Green.

Lawn Terraces

An attractive modern design, perfect for concerts, lectures and speaking engagements. This space also includes the West Gate and 14th Street Overlook.

The Gardens, Section B

Great views of the Park, the Lake and the Rain Curtain. Close to amenities and extra parking.

The Rain Curtain

Unique prime location overlooking the Lake and Wetlands. Great views of the Park and Birmingham skyline.

Lakefront, Sections A,B,C,D

Four separate lakefront spots with beautiful views of Vulcan and the mountains. Perfect for an intimate picnic!

17th Street Plaza, Section B

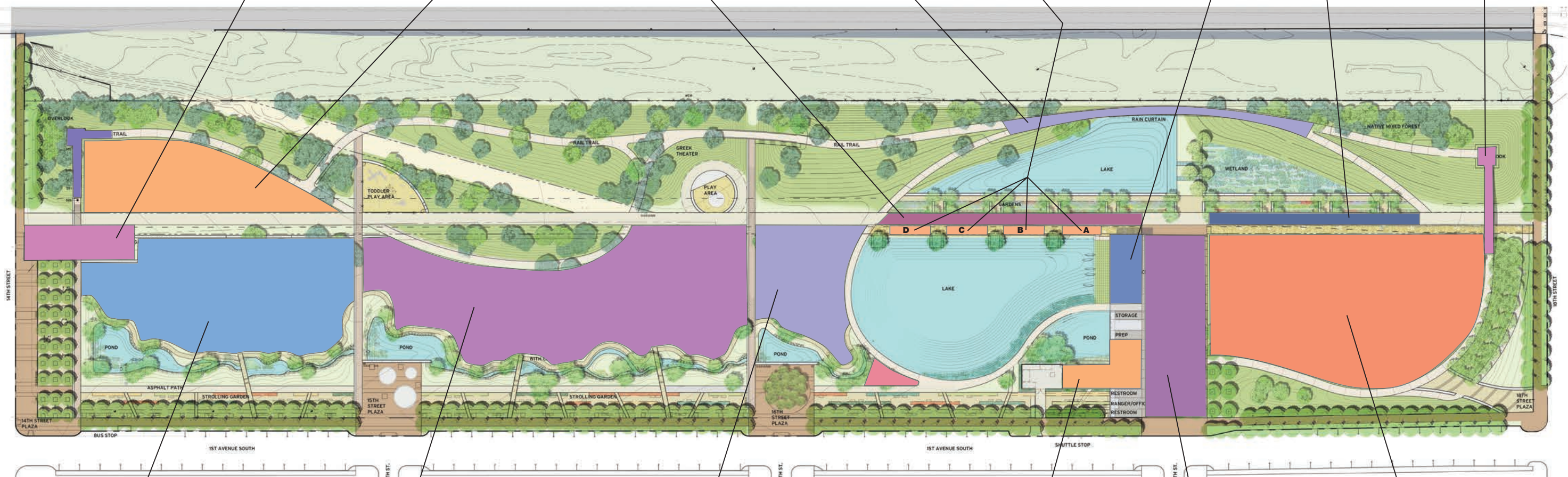
Conveniently located near amenities and parking. Covered area overlooks the Lake and affords great views of the Park.

The Gardens, Section A

Great views of the Park, the Wetlands and the Rain Curtain. Close to amenities and extra parking.

18th Street Overlook

Sunset view
Exclusive area with elevated vantage point affording breathtaking views of City and Park. Powell Street Bridge is included. Close to additional parking. Perfect for small gatherings.



RAILROAD PARK Birmingham, Alabama
November 3, 2009

The West Green

Very large rental area bordered by walking path and pond. Large carbon seat wall provides additional seating for guests.

The Meadow

Very spacious area—our largest green space available. Adjacent to both play areas. Located in the heart of the Park, The Meadow is bordered by a pond and Wetland Stream. Hillside provides additional beauty and privacy.

The Hillside

Spectacular elevated view of the entire Park, overlooking the Lake. The area is bordered by a pond and small walking trail. The Hillside also features a small bridge and four carbon wall seats. Great space!

17th Street Plaza, Section A

Conveniently located near amenities and parking. Includes covered area and the grassy Ceremony Alley.

17th Street Plaza

Large area convenient to amenities and parking. Covered sections are also available. Affords great views of The Rain Curtain, Gardens, Lake, Pond and Amphitheatre.

Amphitheatre

Large grassy area close to amenities and parking. Accommodates up to 4,000 people. Great sound quality makes the Amphitheatre perfect for movies and concerts.

Book your space now! Call 205-521-9933 Email events@railroadpark.org Go Online www.railroadpark.org