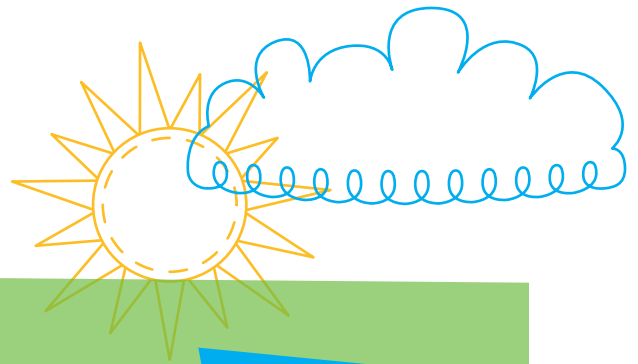




JUVENILE ARTHRITIS

FAMILY NETWORK



The Arthritis Foundation is proud to offer the Juvenile Arthritis Family Network to serve you and your family! We hope you can join our group, meet new families and learn more about juvenile arthritis.

Kids
Don't forget your siblings!

WHO: Children with arthritis and their families

WHAT: An opportunity to meet other families dealing with juvenile arthritis

WHEN: The second Saturday of every month from 10 a.m. to noon. (excluding June, July and August)

WHERE: Aurora Health Care - 4th Floor
36500 Aurora Drive
Town of Summit, WI 53066

Children's Schedule
(Volunteers will be there to watch the kids)

9:45 a.m.
Welcome

10:00 a.m. - Noon
Snacks, Games & Crafts

Adult's Schedule
9:45 a.m.
Welcome

10:00 - 11:00 a.m.
Speaker

11:00 a.m. - Noon
Parent Discussion

Map &
Directions
on the
Back

For More Information Contact:
Liz Truax
etruax@arthritis.org
(651) 229-5371 or (800) 333-1380

ARTHRITIS
FOUNDATION®
Upper Midwest Region

Map and Directions

Aurora Health Care - 4th Floor

36500 Aurora Drive

Town of Summit, WI 53066

Suggested Directions:

Come in through the Hospital Entrance (there are 5 entrances). Exit hwy 67 from I 94 and go south. There is a stoplight at DR (Dousman Road) where you will turn left (east). Take the entrance into the Medical Center on your left. At this point you will be heading straight toward the Vince Lombardi Cancer Center entrance so turn right. The hospital will be on your left and the entrance furthest east will be the Hospital Entrance.

